



ASSEMBLY OF TABIHAUS® PANELS

INSTALLATION ON FAÇADES

NECESARY TOOLS

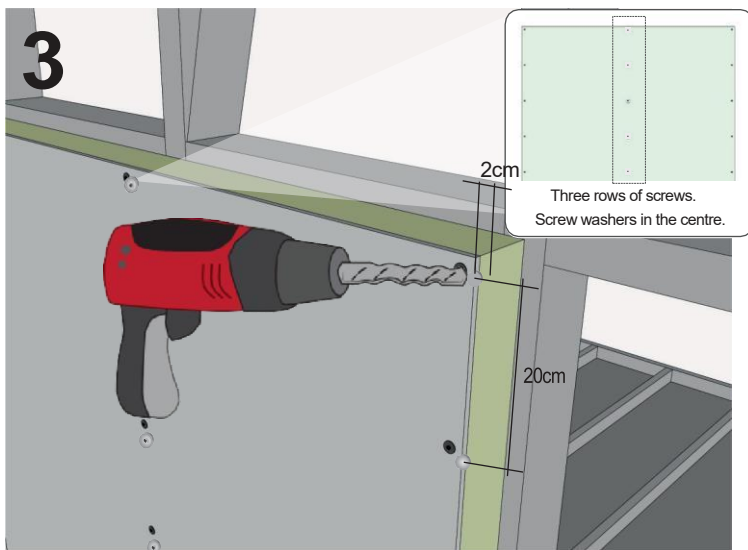
- Circular saw with cut-off saw and guide
- 600ml silicone gun (pneumatic recommended)
- Screwdriver with depth stop
- Widia disc
- Cutter



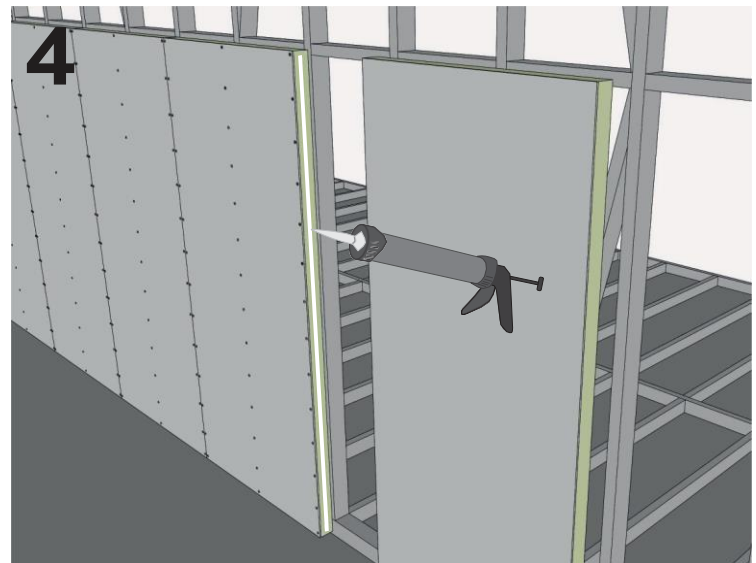
Apply a bead of polymer to the ENTIRE support area (metal or wooden profiles). Do not apply it only in spots.



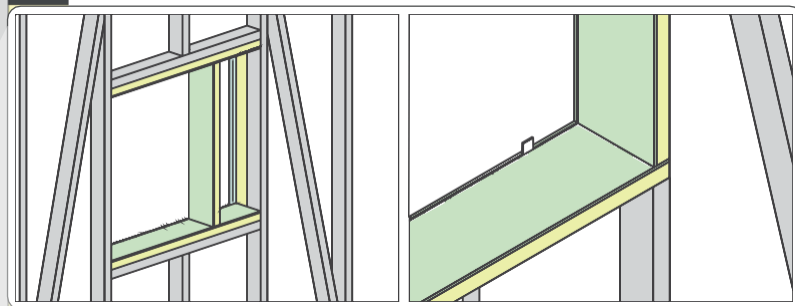
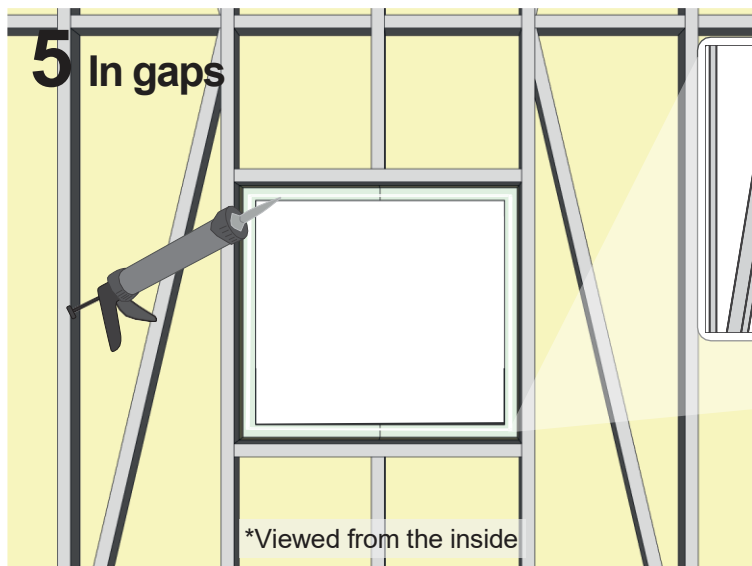
With the help of a partner, place the panel in the desired location. At the start of the façade, leave a gap of 6 mm using the grey shims, position and level the panel. These 6 mm will be filled with TABIHAUS® polymer.



Screw the panel, with a distance of at least 2 cm from the end of the panel. Each screw must be screwed 20 cm apart, creating an arrangement that covers the entire surface of the panels. Minimum 7 screws/m². Use the washers supplied in the middle row.

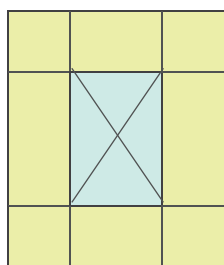


Apply a bead of polymer around the entire perimeter of the panel, following the line that marks the panel with the XPS. Remove by hand if excess polymer has come out at the joint. This will seal the joint between the installed panel and the next panel.

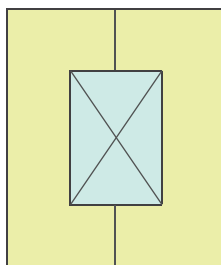


To install the jambs, apply a bead of polymer to the ENTIRE support area (in this case, on the metal profiles and on the panel). Make the cut in the same way as in the corners so that the XPS is NEVER visible.

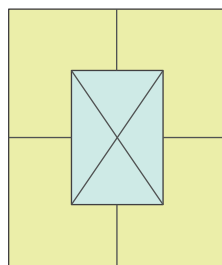
Take note



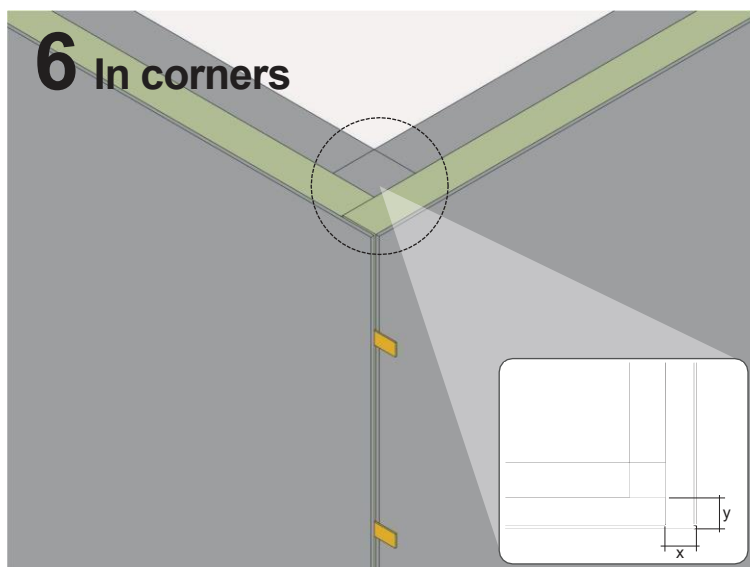
Wrong



Right



Right



Cut XPS with cutter (XPS must be cut at the same distance as the thickness of the panel, i.e. $x=y$). Place 6 mm shim at corners, then fill with TABIHAUS® polymer.

Remember

- On façades every 14m continuous leave 6 mm joint (whether panels are placed horizontally or vertically).
- Leave 6 mm at the start of the façade, at the junction with the roof and in corners. The rest of the panels are to be installed head-to-head against each other.
- If excess polymer has come out at the joint, it can be removed manually by wiping with a damp cloth. Once the polymer has dried, it can only be removed mechanically (sanding).