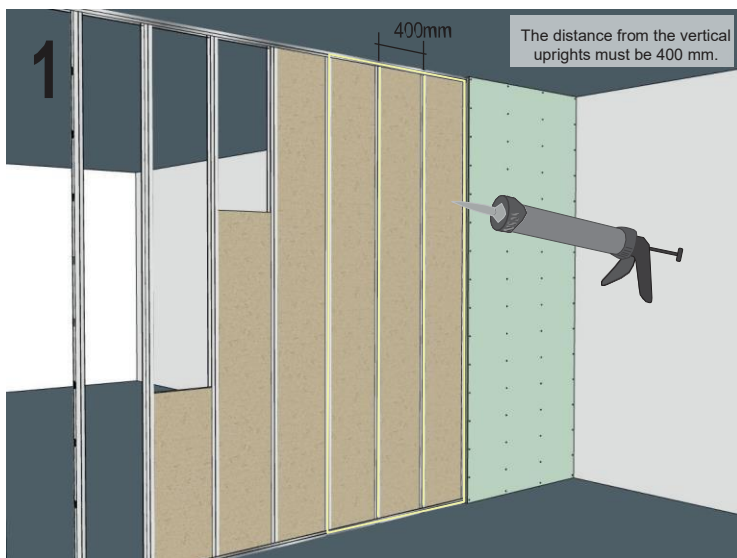


# ASSEMBLY OF TABIHAUS® PANELS

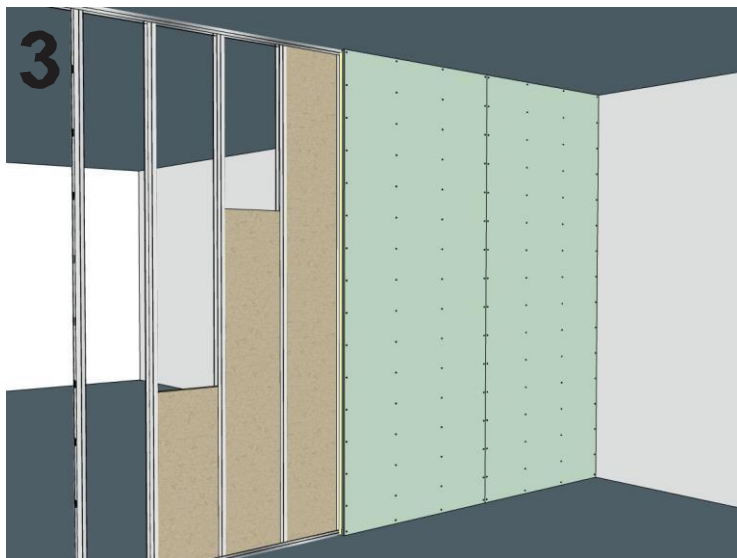
## INSTALLATION ON INTERIOR PARTITIONING

### NECESSARY TOOLS

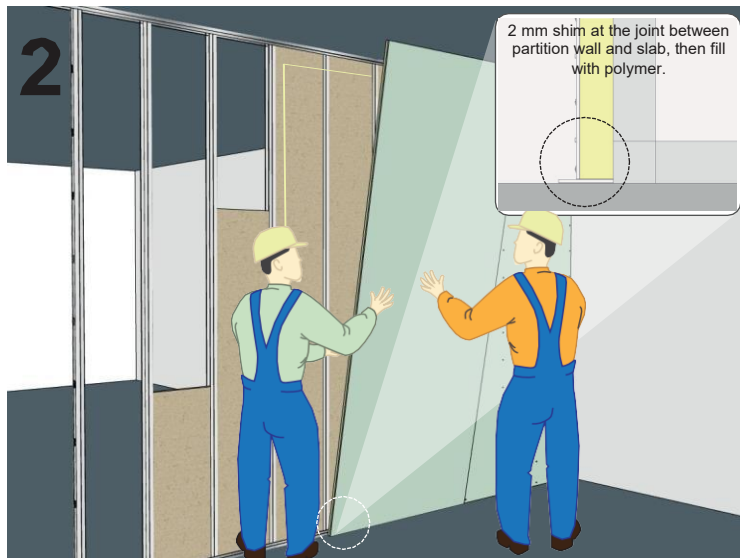
- Circular saw with cut-off saw and guide
- 600ml silicone gun (pneumatic recommended)
- Widia disc
- Screwdriver with depth stop
- Cutter



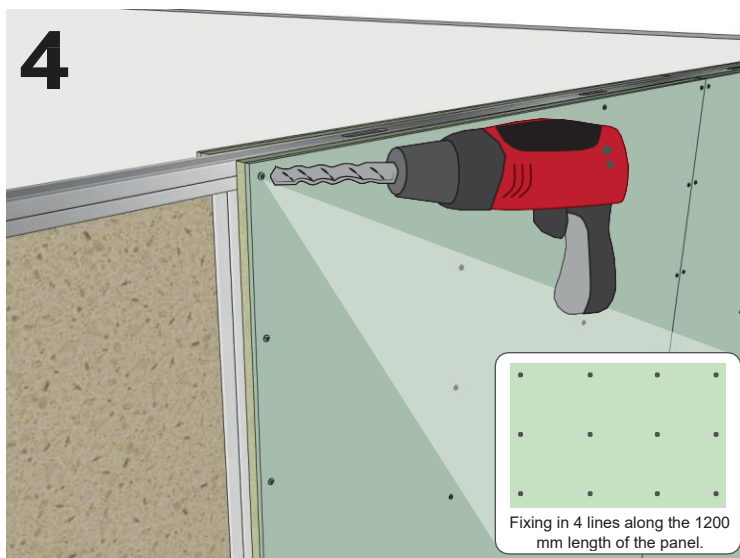
Prepare the usual structure. Apply a bead of polymer to the ENTIRE supporting structure (metal or wooden profiles). Do not apply it only in spots.



For the next panel, apply a bead of polymer around the entire perimeter of the panel, placed along the line of the panel with the XPS and on the supporting structure (as shown in point 1). Remove by hand if excess polymer has come out at the joint. This will seal the joint between the installed panel and the next panel.

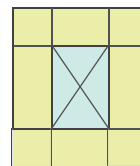


With the help of a colleague, place the panel in the desired location. Place a 2 mm shim at the joint between the partition wall and the floor slab, then fill with polymer.

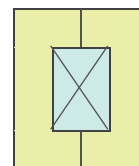


Screw the panel at least 2 cm away from the end of the panel. It must be screwed in such a way that there is a 4-line fastening over the 1200 mm length of the panel.

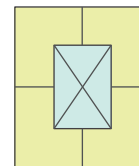
**Take note**  
In window and door openings



**Wrong**



**Right**



**Right**