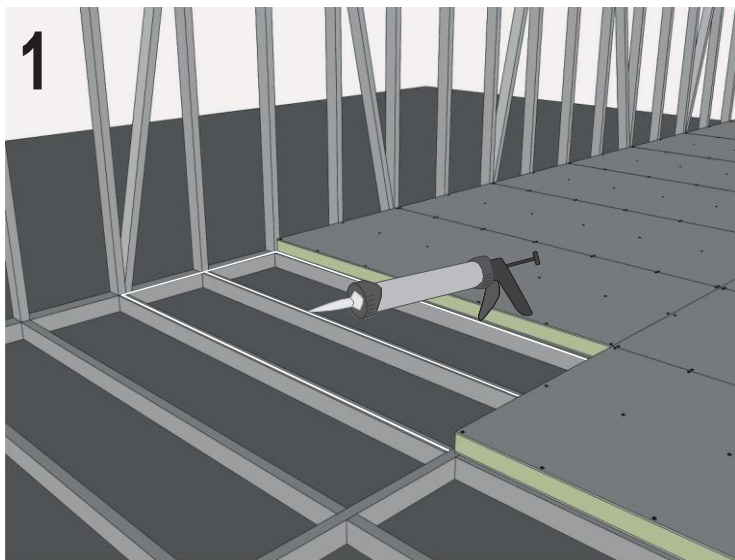


ASSEMBLY OF TABIHAUS® PANELS

INSTALLATION ON SLABS

NECESSARY TOOLS

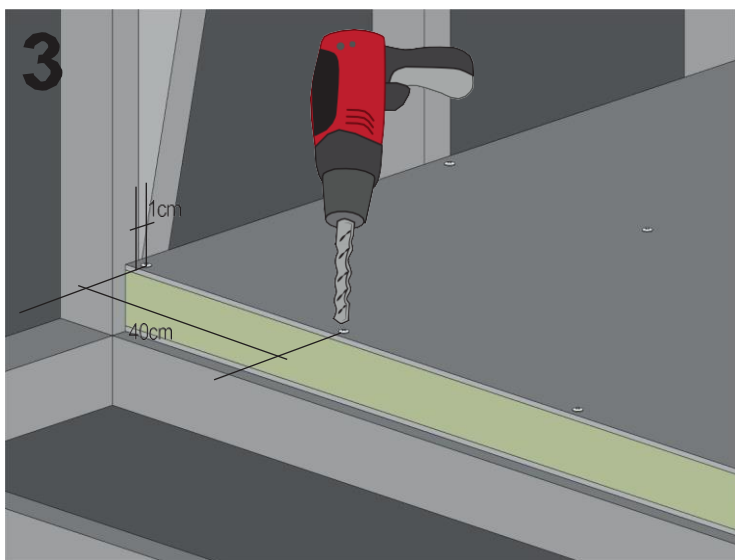
- Circular saw with cut-off saw and guide
- Screwdriver with depth stop
- Cutter
- 600ml silicone gun (pneumatic recommended)
- Widia disc



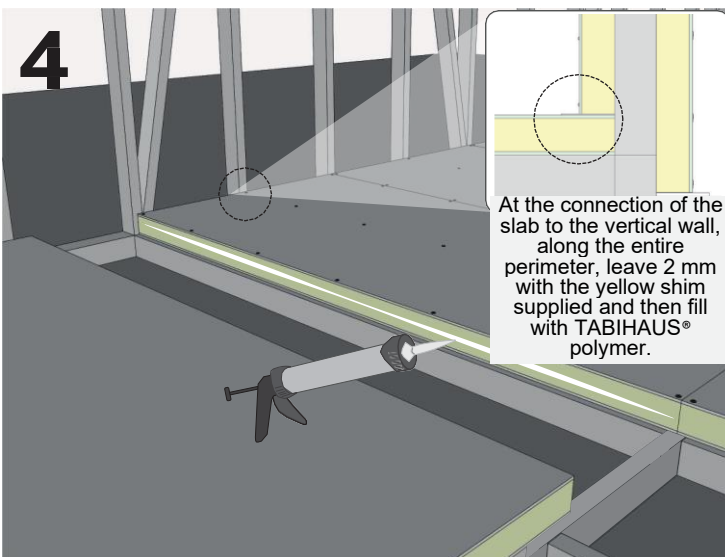
Apply a bead of polymer to the ENTIRE support area (metal or wooden profiles). Do not apply only for points.



With the help of a partner, place the panel in the desired location.



Screw the panel, with a distance of at least 1 cm from the end of the panel. Each screw must be screwed at a spacing of 40 cm, creating an arrangement that covers the entire surface of the panels. Minimum 4 screws/m².



At the connection of the slab to the vertical wall, along the entire perimeter, leave 2 mm with the yellow shim supplied and then fill with TABIHAUS® polymer.

Apply a bead of polymer around the perimeter of the installed panel. This will seal the joint between the installed panel and the next panel.